

Victaulic® FireLock™ Series FL-RES/SW
Residential
Horizontal Sidewall and Recessed Horizontal Sidewall
Sprinklers, K4.2 (6.0), K4.4 (6.3), K5.6 (8.0)



1.0 PRODUCT DESCRIPTION

RESIDENTIAL HORIZONTAL SIDEWALL/RECESSED HORIZONTAL SIDEWALL SPRINKLERS			
SIN	V2738	V4431	V2744
ORIENTATION	HSW	HSW	HSW
K-FACTOR	4.2 Imp./6.1 S.I.	4.4 Imp./6.3 S.I.	5.6 Imp./8.1 S.I.
CONNECTION	½" NPT/15 mm	½" NPT/15 mm	½" NPT/15 mm
MAX. WORKING PRESSURE	175 psi (1200 kPa)	175 psi (1200 kPa)	175 psi (1200 kPa)
GLOBE RE-DESIGNATION	–	GL4431	–
GLOBE EQUIVALENT	GL4231	–	–

AVAILABLE WRENCHES				
SPRINKLER	V27 Recessed	V27 Open End	V56 Recessed	V56 Open End
SIDEWALL	■	■	■	■

Factory Hydrostatic Test: 100% @ 500 psi/3447 kPa/34 bar

Min. Operating Pressure: UL: 7 psi/48 kPa/5 bar

Temperature Rating: See tables in section 2.0

¹ For K-Factor when pressure is measured in bar, multiply S.I. units by 10.0.

ALWAYS REFER TO ANY NOTIFICATIONS AT THE END OF THIS DOCUMENT REGARDING PRODUCT INSTALLATION, MAINTENANCE OR SUPPORT.



2.0 CERTIFICATION/LISTINGS

SIN	Nominal K Factor		Listing Agency/ Approved Temperature Ratings		Max. Coverage Area Width x Length	Flow	Pressure	Deflector to Ceiling/Mounting Surface Distance	Adjustment	Minimum Spacing
	Imperial	S.I. ²	155°F/68°C	175°F/79°C	ft x ft m x m	GPM L/min	PSI kPa	in mm	in mm	ft m
V2738	4.2	6.1	cULus	cULus	12 x 12 3.7 x 3.7	14 53.0	11.1 76	4 to 6 100 to 150	½ and ¾ 15 and 20	8 2.4
					14 x 14 4.3 x 4.3	14 53.0	11.1 76			
					16 x 16 4.9 x 4.9	17 64.4	16.4 113			
					16 x 18 4.9 x 5.5	19 72.0	20.5 140			
					16 x 20 4.9 x 6.1	23 87.1	30.0 210			
					12 x 12 3.7 x 3.7	15 56.8	12.8 88	6 to 12 150 to 300		
					14 x 14 4.3 x 4.3	17 64.4	16.4 113			
					16 x 16 4.9 x 4.9	19 72.0	20.5 140			
					16 x 18 4.9 x 5.5	24 90.8	32.6 225			
					16 x 20 4.9 x 6.1	28 106.0	44.4 306			
V4431	4.4	6.3	cULus	cULus	12 x 12 3.7 x 3.7	13 49	8.7 60	4 to 6 100 to 150	½ 15	
					14 x 14 4.3 x 4.3	15 57	11.6 80			
					16 x 16 4.9 x 4.9	16 61	13.2 91			
					16 x 18 4.9 x 5.5	19 72	18.7 141			
					16 x 20 4.9 x 6.1	23 87	27.3 188			
V2744	5.6	8.1	cULus	–	12 x 12 3.7 x 3.7	15 56.8	7.2 50	4 to 6 100 to 150	½ and ¾ 15 and 20	
			–	cULus	12 x 12 3.7 x 3.7	16 60.6	8.2 56			
			cULus	cULus	14 x 14 4.3 x 4.3	19 71.9	11.5 80			
					16 x 16 4.9 x 4.9	23 87.1	16.9 116			
					16 x 18 4.9 x 5.5	25 94.6	19.9 140			
					16 x 20 4.9 x 6.1	30 113.6	28.7 198			
					12 x 12 3.7 x 3.7	17 64.4	9.2 63	6 to 12 150 to 300		
					14 x 14 4.3 x 4.3	22 83.3	15.4 106			
					16 x 16 4.9 x 4.9	27 102.2	23.2 160			
					16 x 18 4.9 x 5.5	31 117.3	30.6 211			
					16 x 20 4.9 x 6.1	37 140.1	43.6 301			

² For K-Factor when pressure is measured in bar, multiply S.I. units by 10.0.

NOTE

- Reference the specific agency website listings for the most up-to-date certification information.

3.0 SPECIFICATIONS – MATERIAL

Deflector: Bronze

Bulb Nominal Diameter: 3.0 mm

Load Screw: Bronze

Pip Cap: Bronze

Spring Seal Assembly: PTFE coated Beryllium Nickel Alloy

Frame: Brass

Lodgement Spring: Stainless Steel

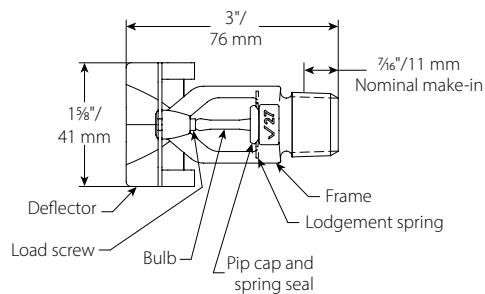
Installation Wrench: Ductile Iron

Sprinkler Frame Finishes:

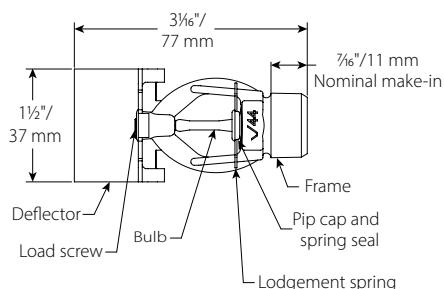
- Plain Brass
- Chrome Plated
- White Polyester Painted
- Flat Black Polyester Painted
- Custom Polyester Painted

NOTE

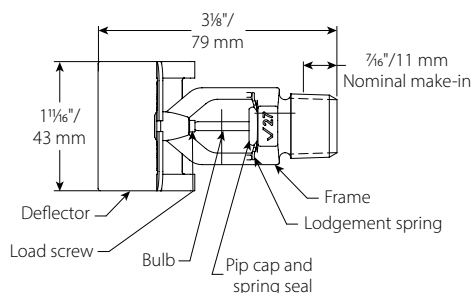
- For cabinets and other accessories refer to separate sheet.



V2738

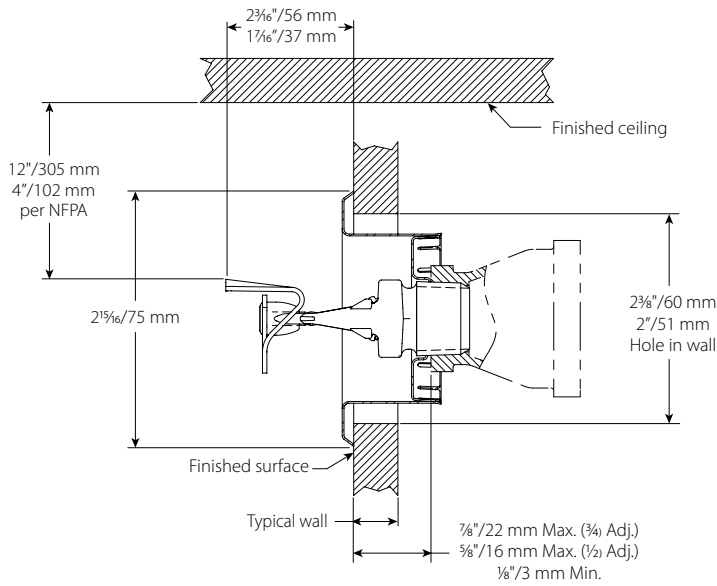


V4431

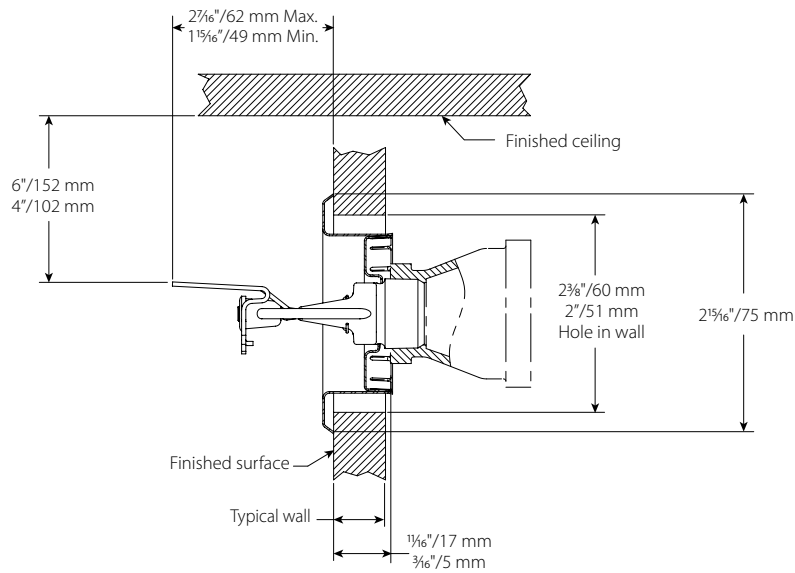


V2744

4.0 DIMENSIONS

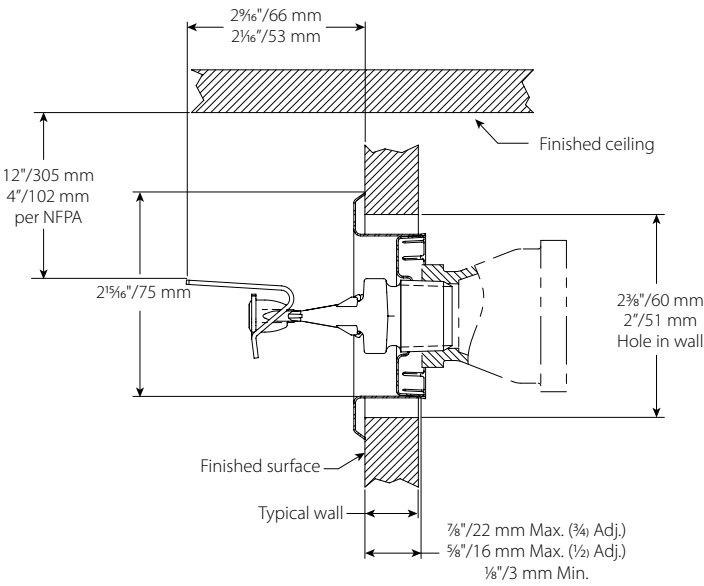


V2738



V4431

4.0 DIMENSIONS (CONTINUED)





V2744

5.0 PERFORMANCE

Sprinkler systems are to be designed to and installed per NFPA, FM Datasheets, and any local standards.

6.0 NOTIFICATIONS



**WARNING**

- Read and understand all instructions before attempting to install any Victaulic products.
- Always verify that the piping system has been completely depressurized and drained immediately prior to installation, removal, adjustment, or maintenance of any Victaulic products.
- Wear safety glasses, hardhat, and foot protection.

Failure to follow these instructions could result in death or serious personal injury and property damage.

- These products shall be used only in fire protection systems that are designed and installed in accordance with current, applicable National Fire Protection Association (NFPA) standards, or equivalent standards, and in accordance with applicable building and fire codes. These standards and codes contain important information regarding protection of systems from freezing temperatures, corrosion, mechanical damage, etc.
- The installer shall understand the use of this product and why it was specified for the particular application.
- The installer shall understand common industry safety standards and potential consequences of improper product installation.
- It is the system designer's responsibility to verify suitability of materials for use with the intended fluid media within the piping system and external environment.
- The material specifier shall evaluate the effect of chemical composition, pH level, operating temperature, chloride level, oxygen level, and flow rate on materials to confirm system life will be acceptable for the intended service.

Failure to follow installation requirements and local and national codes and standards could compromise system integrity or cause system failure, resulting in death or serious personal injury and property damage.

7.0 REFERENCE MATERIALS

Ratings: All glass bulbs are rated for temperatures from -67°F/-55°C.

<p>User Responsibility for Product Selection and Suitability</p> <p>Each user bears final responsibility for determining the suitability of Victaulic products for their end-use application, in accordance with industry standards, project specifications, and Victaulic's published performance, maintenance, and safety data, as well as all warnings and installation instructions. Nothing in this or any other document, nor any verbal recommendation, advice, or opinion from any Victaulic employee, shall be deemed to alter, vary, supersede, or waive any provision of Victaulic Company's standard conditions of sale, warranty, installation instructions, or this disclaimer.</p> <p>Installation</p> <p>Always refer to and follow the Victaulic Installation Handbook or installation instructions for the product you are installing. Handbooks are included with each shipment of Victaulic products, providing complete installation and assembly data, and are available in PDF format on our website at victaulic.com.</p> <p>Warranty</p> <p>Refer to the Warranty section of the current Price List or contact Victaulic for details.</p>	<p>Intellectual Property Rights</p> <p>No statement concerning the use of any material, product, service, or design is intended, or should be construed, to grant any license under any patent or other intellectual property right of Victaulic or any of its affiliates, or as a recommendation for the use of such material, product, service, or design in the infringement of any patent or other intellectual property right. The terms "Patented" or "Patent Pending" refer to design or utility patents or patent applications for articles and/or methods of use in the United States and/or other countries. Victaulic and all other Victaulic marks are the trademarks or registered trademarks of Victaulic Company, and/or its affiliated entities, in the U.S. and/or other countries.</p> <p>Note</p> <p>All products bearing a Victaulic trademark are manufactured by Victaulic or to Victaulic specifications. All products are to be installed only in accordance with the applicable Victaulic installation instructions. Victaulic reserves the right to change product specifications, designs and standard equipment without notice and without incurring obligations.</p>
---	---